

INSTRUCTION CONFIGURATION LOGO SPA DISPLAY CONDAIR OMEGA / CONDAIR SPA CONTROL

How do I configure my logo for the Condair Spa Display? What is needed?

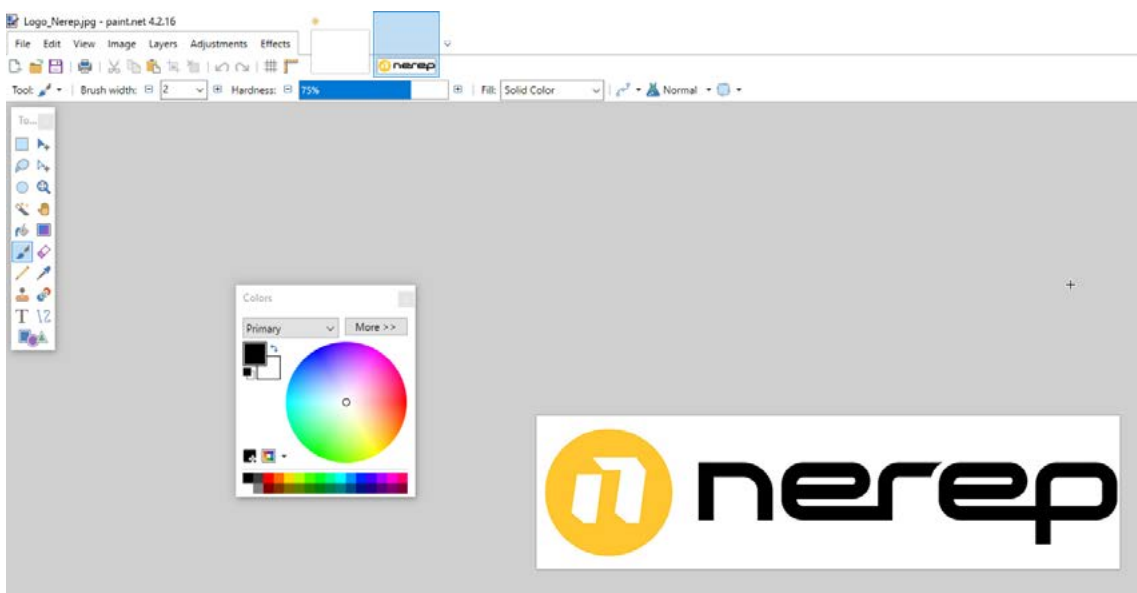
- A graphics program, such as *Photoshop*, the freeware *Pixelformer*, or *paint.net*
- A logo, preferably as jpg.
 - a light version with white background
 - a dark (negative) version of the logo

How to do it?

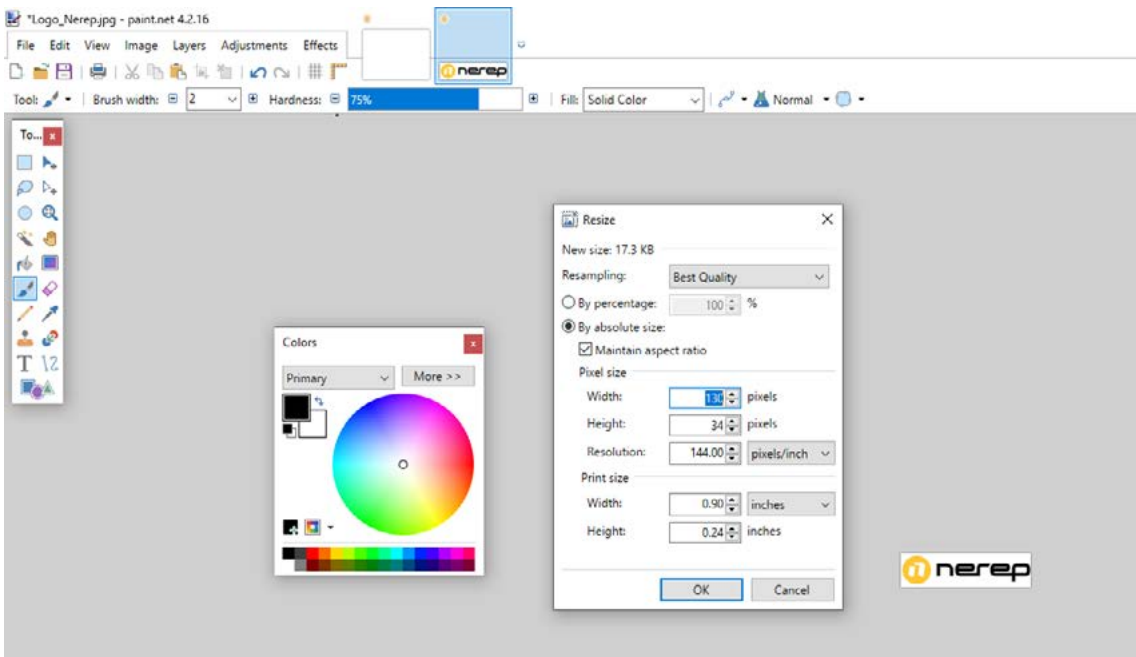
1. First open the normal version, the background must be white. Select RGB mode with alpha channel.
2. Set the format to 136 x 70 pixels. Please make sure that the proportions remain the same.
3. Export logo as .bmp (A8:R8:G8:B8). Filename should be *LogoLight.bmp*.
4. Then create the dark version.
5. Open the dark (negative) version, the background must be dark gray (color #1f1f1f or RGB each 31%).
6. Select RGB mode with alpha channel. Das Format auf 136 x 70 Pixel einstellen.
7. Export logo as .bmp (A8:R8:G8:B8). Filename should be *LogoDark.bmp*.

Example configuration with *paint.net*. The logo was kindly provided by the company Nerep.

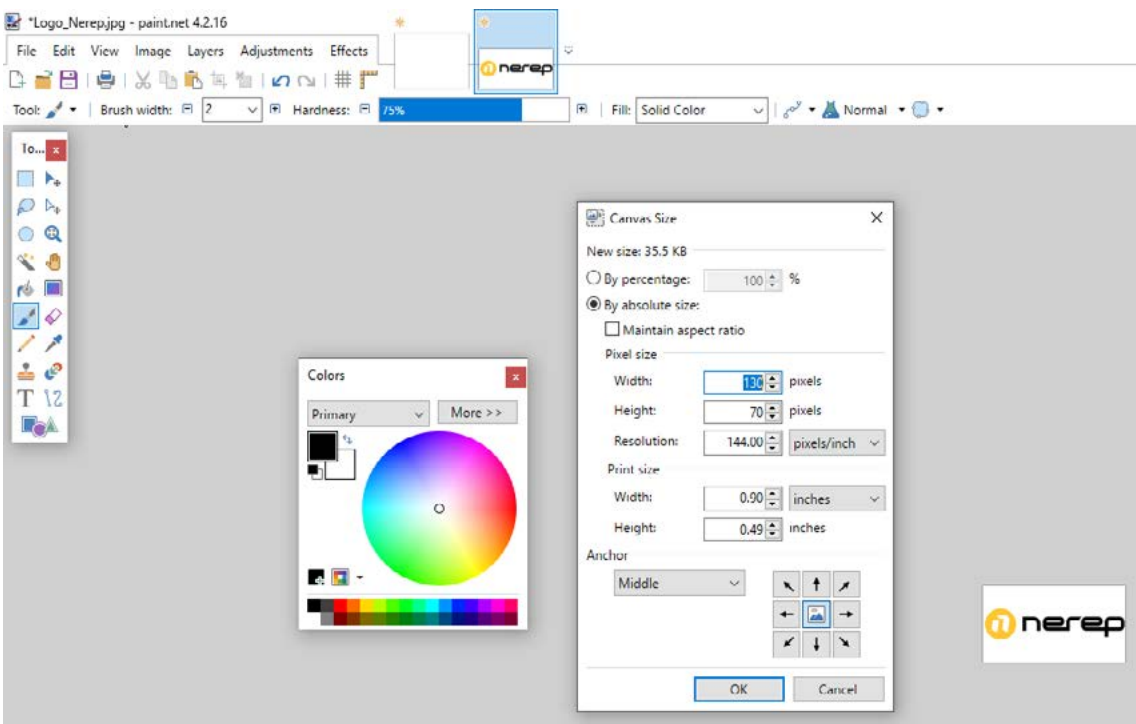
8. Open the jpg file with the programm: *paint.net*.



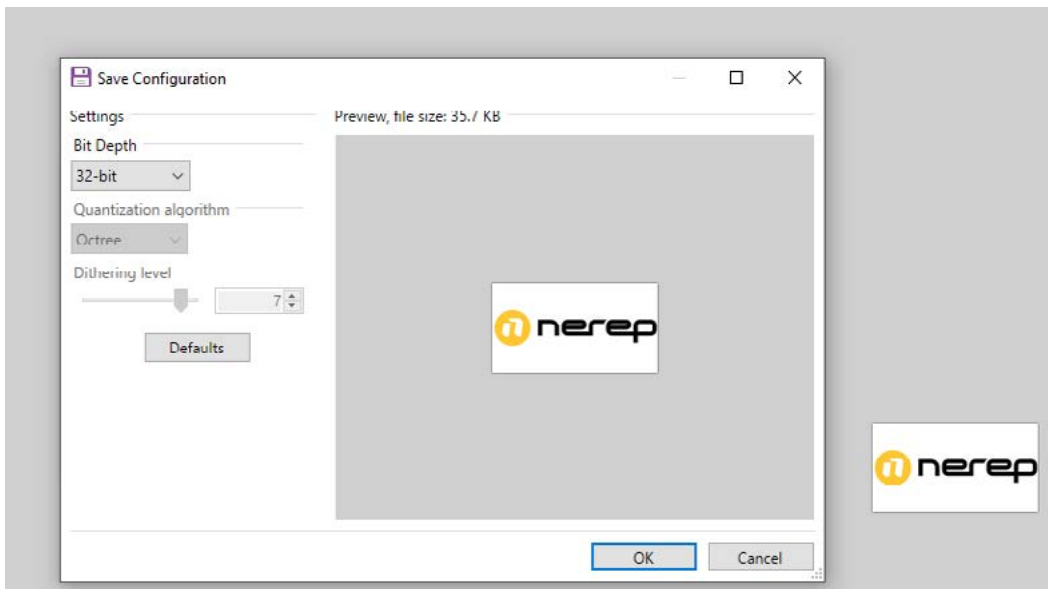
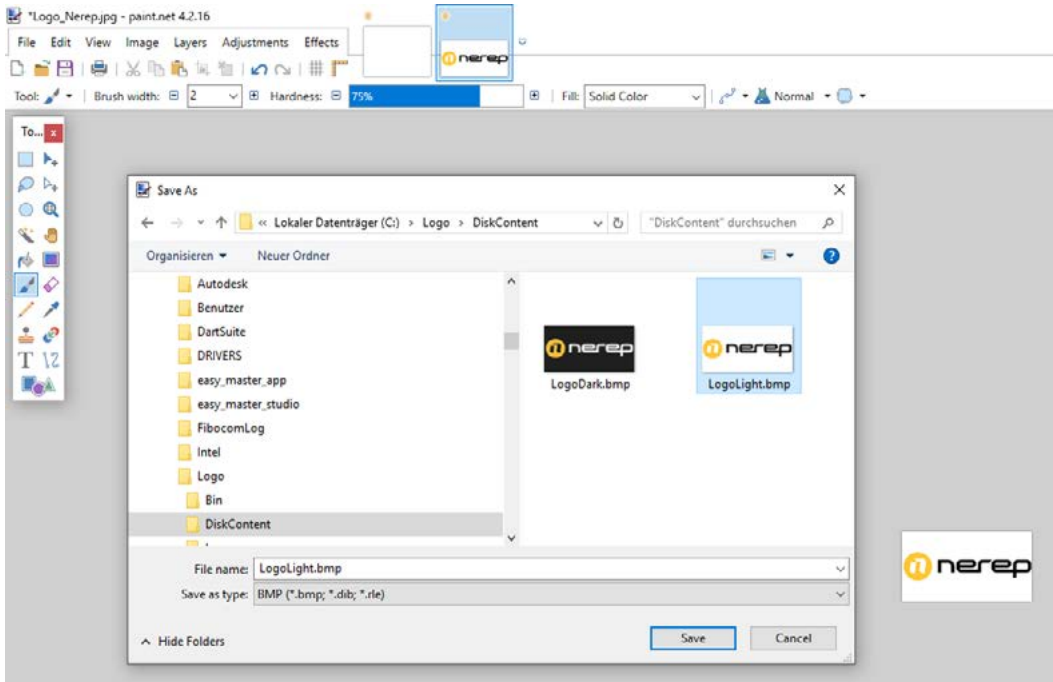
9. Adjust the image size.



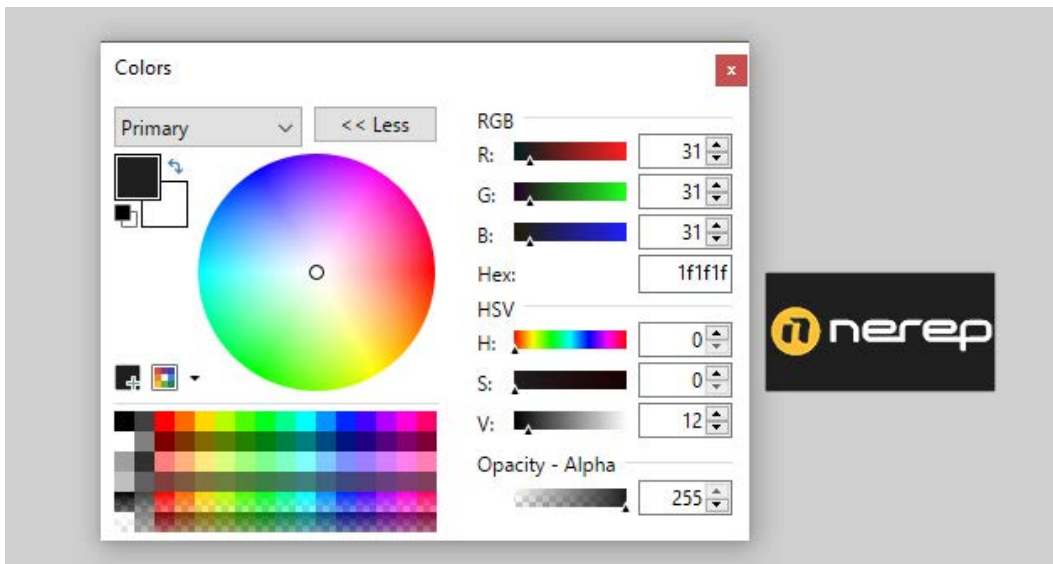
10. If necessary, adjust the canvas size (final format 136 x 70 px).



11. Save as *LogoLight.bmp*.



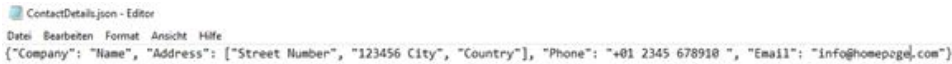
12. For the dark logo, adjust the background color (R31%G31%B31% or color #1f1f1f):



13. Then save as *LogoDark.bmp*.

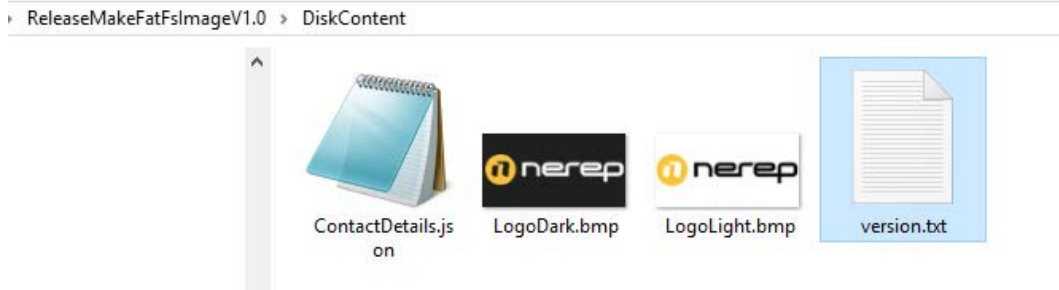
14. Copy both logos to the "DiskContent" folder.

15. Open the *ContactDetails.json* in the same folder with the editor and fill in the contact details.

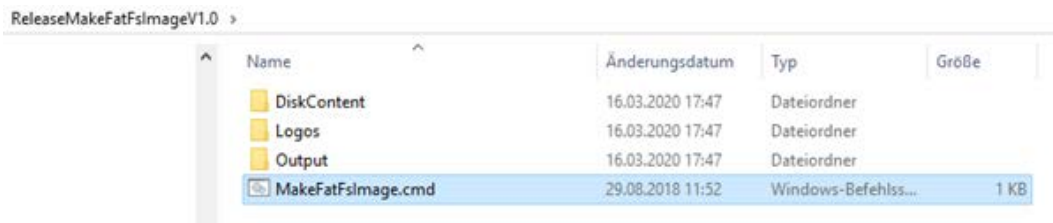


```
["Company": "Name", "Address": ["Street Number", "123456 City", "Country"], "Phone": "+01 2345 678910 ", "Email": "info@homepage.com"]
```

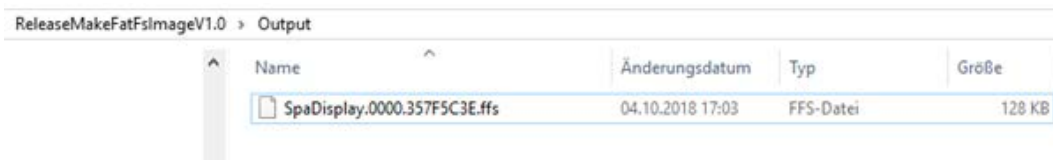
16. Make sure that the *Version.txt* file is present.



17. To create the actual logos, run the *MakeFatFsImage.bat* file:

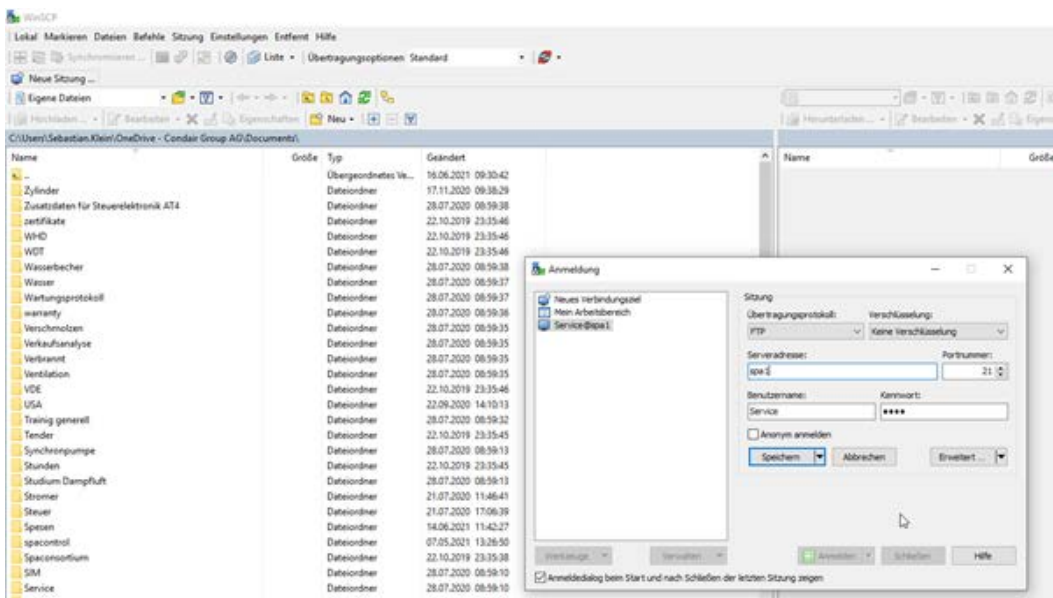


18. Now a *.ffs file is created in the „Output“ folder.

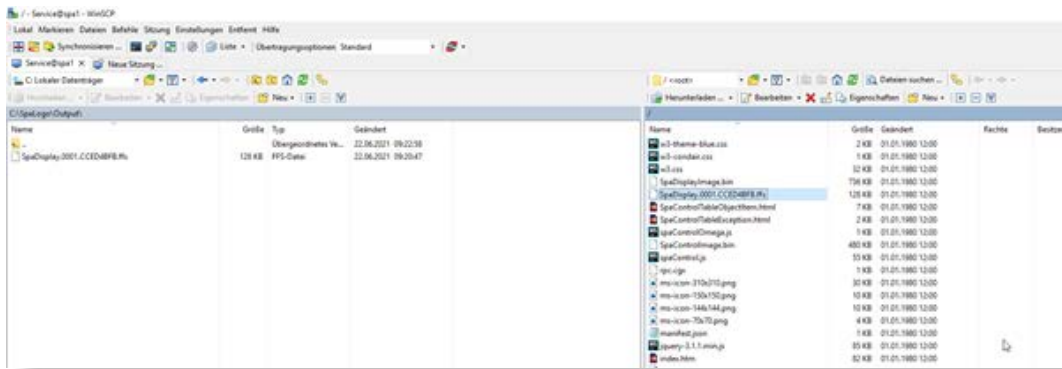


19. The *.ffs file must now be uploaded to the Omega/Delta Spa via FTP server (e.g. *WinSCP*).
(See the instructions „*Omega software update*“).

If there is already a *.ffs file on the Omega, it must be deleted first.



20. Copy *.ffs to the Omega or Delta Spa Control.



21. Then do a **file system reset** on the spa display.
(Menu → Engineering (code 1055) → Admin → Display → Filesystem reset

22. Now the display is without indication for a moment and must restart.
The message „W206 Update in Progress“ appears in the yellow warning triangle.
After a few minutes, the new logo appears on the display.

