

THE PROFESSIONALS'
CHOICE FOR
DEMINERALIZED
WATER



NORDMANN Omega Pro VE

Steam generator for demineralized water
Dependable, intuitive, service-friendly
Plug and play installation



Integrates seamlessly

NORDMANN Omega Pro comes with all common ports to enable its easy integration into building management systems (BMS), including Modbus, BACnet, etc.

Modbus®

 BACnet™

NORDMANN Omega Pro VE



Designed for demineralized water

NORDMANN Engineering's resistive type unit features state-of-the-art, high-quality design for superior performance with greater output. And it's easy to install, operate and maintain.

The thought-out construction, linked with high-quality materials help to hold the owner's costs on an absolute minimum.

Nordmann Engineering steam generators – the most reasonable long-term solution.



Filling cup with backflow protection



The filling cup is compliant with the most recent regulations and ensures that backflow cannot contaminate the fresh water. Separators are unnecessary.



Precise control

Operating on their own circuit, the high-quality heating elements permit precise regulation, enabling operators to save energy significantly. The carefully engineered design allows easy and quick removal of the water tank, as well.

Dual-purposed level monitoring



NORDMANN Omega Pro possesses two autonomously acting tank level sensors.

Number 1 monitors and regulates the tank level to meet system demand.

Number 2 measures and determines if there is enough water in the tank. If there is too little, the unit will not begin to operate.



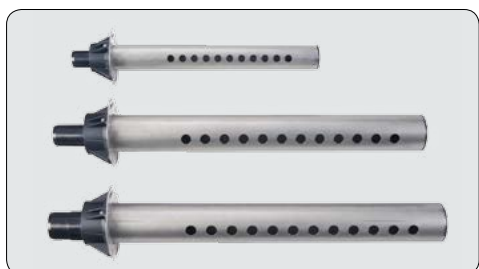
Optimum steam distribution

The MultiPipe system is geared ideally to humidifiers made by NORDMANN Engineering. The steam distribution pipes and jets are made of stainless steel.

Very short humidification distance – only a half or as little as a quarter – compared to conventional steam distribution pipes. Which makes the humidification system perfectly suited to locations where space is at a premium.

MultiPipe distributes the steam evenly and drip-free throughout the entire cross-section of the air duct.

MultiPipe is custom-made to fit the dimensions of the air duct. It is supplied ready for connection and reduces fitting time to a minimum.



Steam distributor pipes for the air duct

Stainless-steel steam distributor pipes with integrated condensate return come in lengths suitable for any duct cross-section.



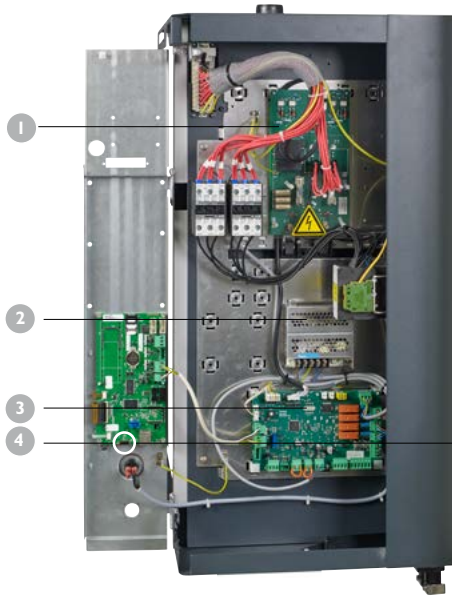
Insulating cover for the water tank

With this heat insulation you save energy costs.

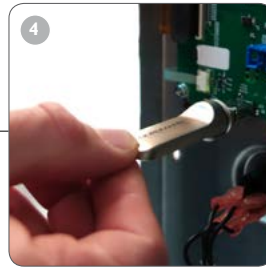


Touchscreen display

Thanks to an intuitive menu, the unit operates with ease, providing full-text fault messages for better interaction with the steam unit.



- 1 **Power board with semiconductor for precise control**
- 2 **24V power pack for internal control voltage**
- 3 **Driver for control valves and pumps**
- 4 **USB port for software updates**



System Features and Components

	VE	Option
Touch Control	■	
Multilingual, user-friendly menu	■	
Program, service and information levels	■	
Fine steam capacity control	■	
Real time clock / Timer programming	■	
Div. control signals (0-10V and more)	■	
Stainless steel cylinder	■	
Drainage pump	■	
RS485 interface with Modbus / BACnet IP	■	
Terminals	■	
Installation material	■	
RFI Remote and failure indication relay		■
Mounting frame		■
BMS interface LonWorks		■
Drainage water cooling/ Hygiene flush		■
CVI integrated control voltage 230V		■
TR Transformer 400V to 230V		■
Insulation steam cylinder		■
Overpressure security valve		■



- 1 Corrosion-resistant stainless steel cylinder**
- 2 Long-lasting Incoloy heating elements**
- 3 Advanced touch panel makes operation easy**
- 4 Nordmann Engineering quality powder-coated housing**

Technical data

Steam output	kg/h	5	8	10	16	20	24	30	40	50	60	80
Rated power	kW	3.8	6.0	7.4	12.0	14.9	18.0	22.5	30	37.5	44.6	60
Units	Quantity	1	1	1	1	1	1	1	1	2	2	2
Dimensions	Width mm	420	420	420	530	530	530	530	530	2x530	2x530	2x530
	Height mm	670	670	670	780	780	780	780	780	780	780	780
	Depth mm	370	370	370	413	410	413	413	413	413	413	413
Net weight	kg	27.2	27.2	27.2	40.3	40.3	40.3	40.3	40.3	2x40.3	2x40.3	2x40.3
Operating weight	kg	40.2	40.2	40.2	65.8	65.8	65.8	65.8	65.8	2x65.8	2x65.8	2x65.8
Heating voltage	3x200V / 1x230V / 3x400V / 3x415V / 3x440V / 3x460V / 3x480V / 3x500V / 3x600V											
Control voltage	230VAC/1 Ph, 50-60Hz											
Type of protection	IP21											
Conformity	SEV,VDE, DVGW											